

CUTEK[®]

The Beauty of Wood
Powerfully Protected

Who are we?

- CUTEK® products are an innovative wood care system
 - with it's roots in Australia and New Zealand
 - The primary focus is to ensure that wood has the longest life possible
 - Proven performance for over 30 years, on 5 continents
 - CUTEK® products were introduced to the North American market in 2011
-
- Deck Source Inc. is a family owned and run company
 - It was founded by professional deck builders to bring industry leading and innovative decking products to the Canadian market
 - CUTEK® products were part of that assortment – and they amazed us!
 - Since 2014 Deck Source Inc. has been concentrating entirely on the CUTEK® line of products, and is the official Canadian license holder
 - Since 2022 we are the official license holder for the United States



The CUTEK® System

CUTEK® offers a full line of wood care products that Prepare and Protect exterior wood structures

Step 1 ▶ Prepare



Formerly CUTEK® Proclean

Formerly CUTEK® CD33 Naked

Step 2 ▶ Protect



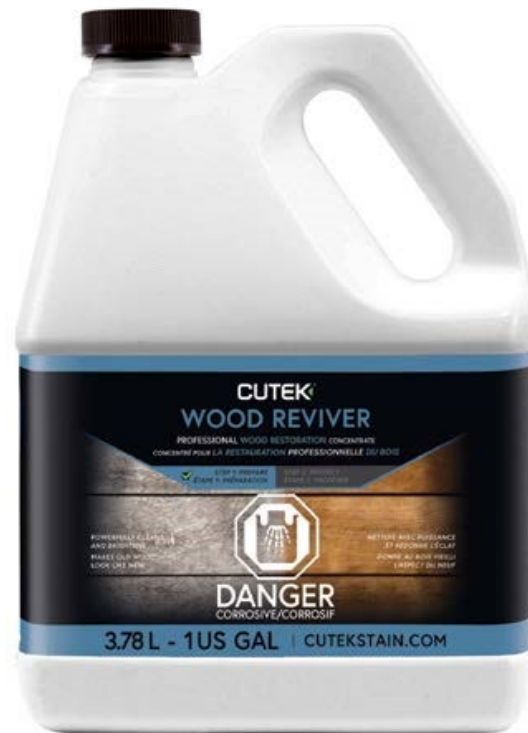
CUTEK® Key Benefits & Cost Considerations

- ✓ Quality and technology of products
- ✓ CUTEK® products are easy to use
 - do not need to be professionally applied, to get professional results
- ✓ CUTEK® Extreme gets twice the coverage of most other coatings
- ✓ CUTEK® Extreme provides a long term cumulative protection
 - FULLY penetrating oil – to protect wood from the inside out
 - Made with non-vegetable oil, and has no water
 - Has a SELF-HEALING effect, and stays mobile in the wood
- ✓ CUTEK® Extreme does not peel or flake
 - maintenance is fast and easy, just wash and recoat, NO sanding required
- ✓ Extends the service life of wood
- ✓ CUTEK® Cares
 - We plant 1 tree for each can of CUTEK® Extreme sold!



Step 1 Prepare – CUTEK® Wood Reviver

Prepares wood that is weathered and/or stubbornly stained for the initial application of CUTEK® Extreme



Formerly CUTEK® Proclean

Step 1 Prepare – CUTEK® Wood Reviver

CUTEK® Wood Reviver is Designed to:

- ✓ Revive all species of wood from years of weathering
 - an alternative to sanding
- ✓ Effectively remove stubborn stains
 - tannins, resins, water, iron, oil & grease
 - as well as mold, mildew, fungus and algae
- ✓ Open wood up to drink in CUTEK® Extreme
- ✓ Prepare smooth or new wood for the initial coat of CUTEK® Extreme
 - helps to remove extractives and break down mill glaze



Step 1 Prepare – CUTEK® Wood Reviver

CUTEK® Wood Reviver is Different from other Restorers/Brighteners:

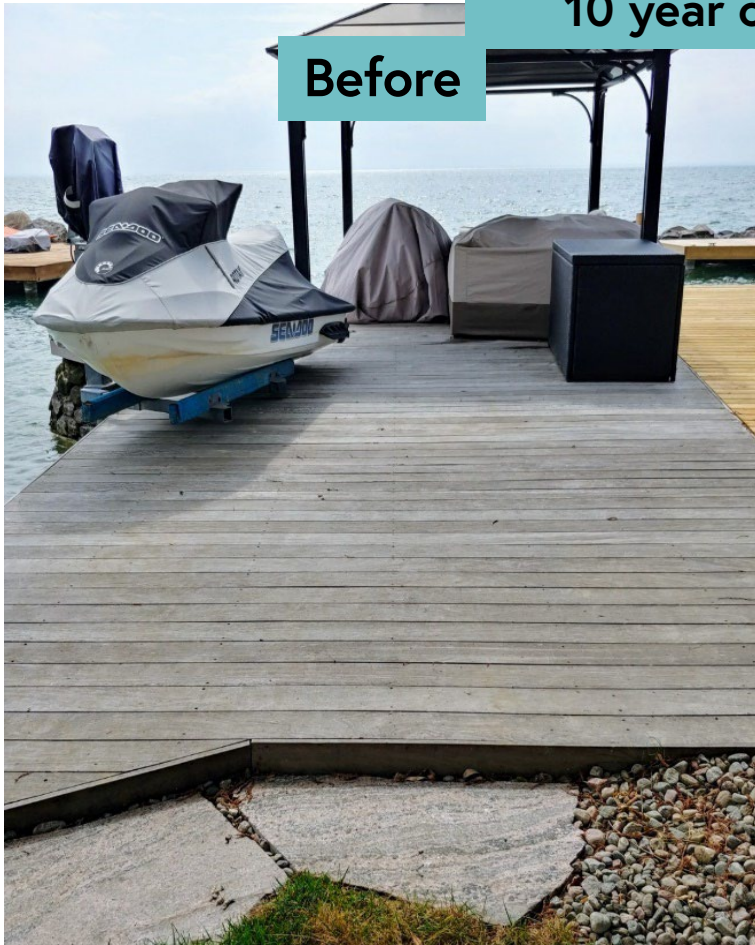
- ✓ 1 product to restore severely weathered wood, and remove all types of stubborn staining
- ✓ Can sit and work on the wood surface for 1 to 24 hrs
- ✓ Does NOT need to be kept wet
- ✓ Can be used full strength or diluted



Step 1 Prepare – CUTEK[®] Wood Reviver

10 year old Ipe deck

Before



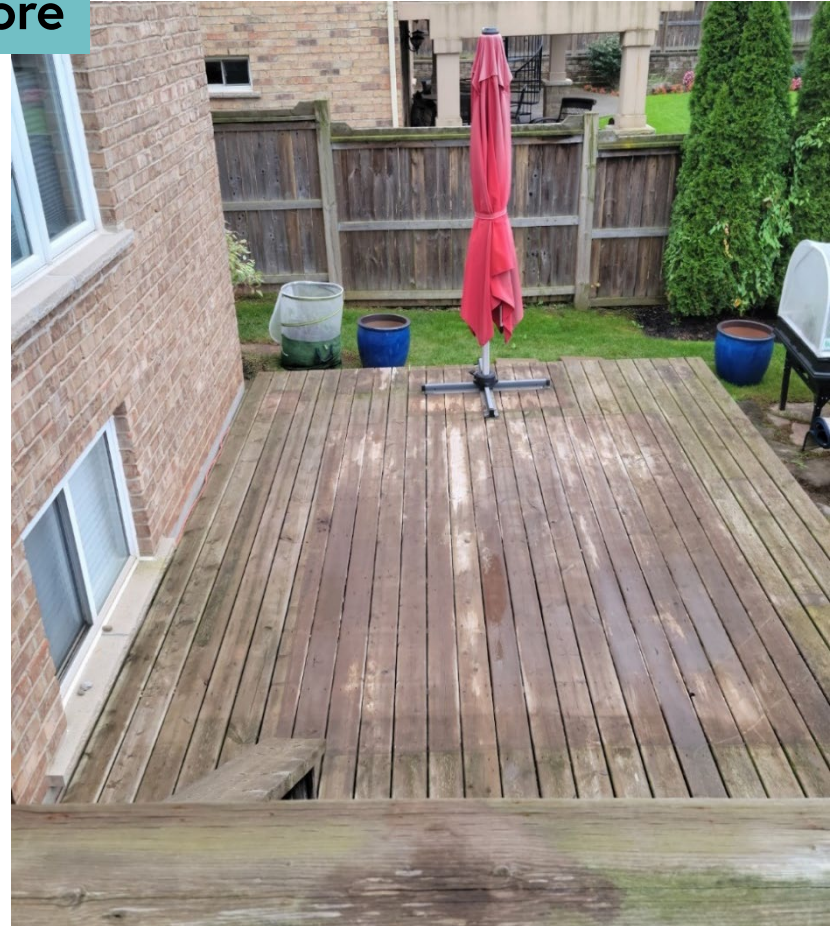
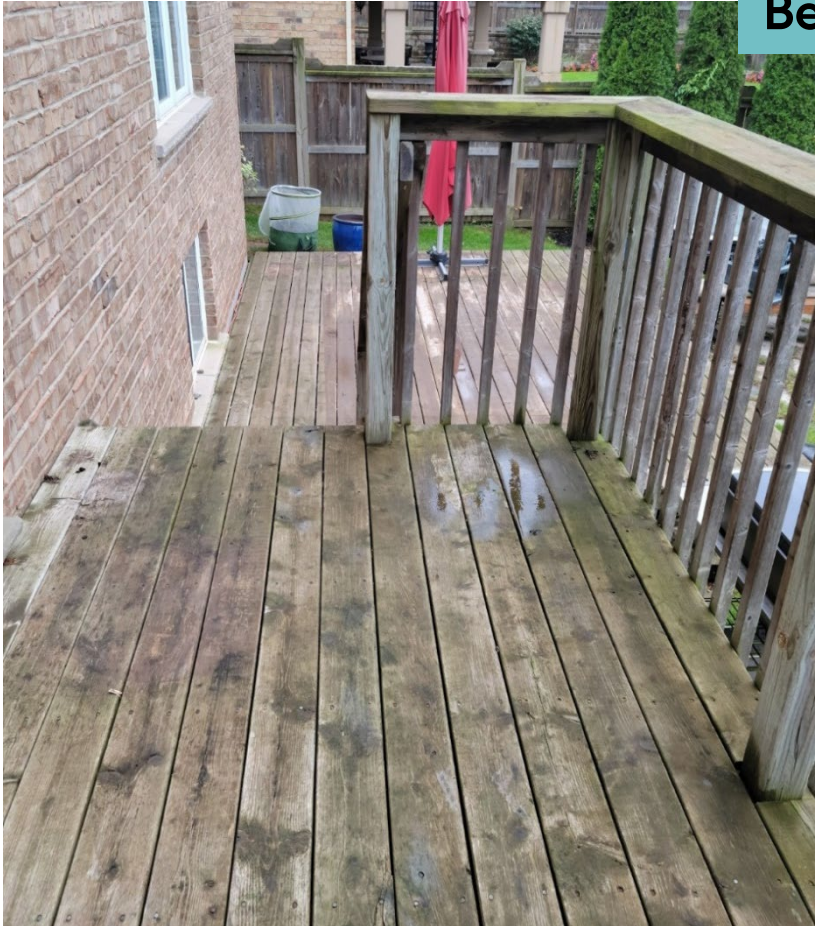
After



Step 1 Prepare – CUTEK® Wood Reviver

10 -15 year old pressure treated deck

Before



Step 1 Prepare – CUTEK® Wood Reviver

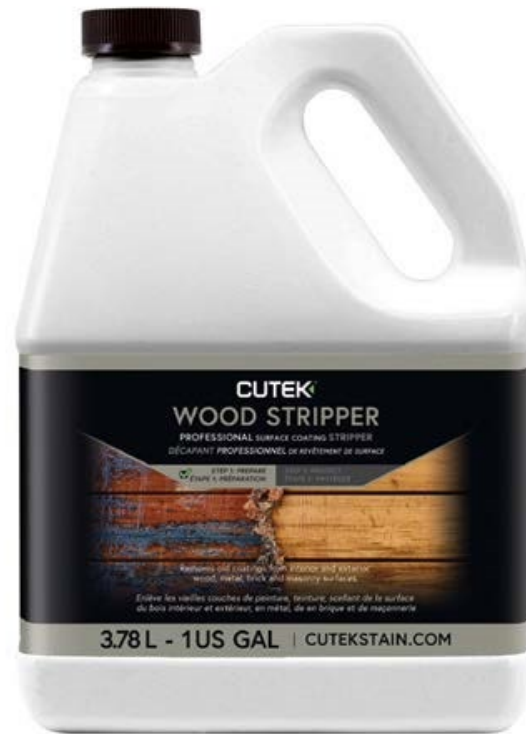
10 -15 year old pressure treated deck

After



Step 1 Prepare – CUTEK® Wood Stripper

Prepares wood by removing existing film forming coatings for the initial application of CUTEK® Extreme



Formerly CUTEK® CD33 Naked

Step 1 Prepare – CUTEK® Wood Stripper

CUTEK® Wood Stripper is a Designed to:

- ✓ **Be a smart and safer alternative**
 - No methylene chloride, or NMP
- ✓ **Remove multiple layers of the most commonly used coatings**
 - latex paints, stains, varnishes, linseed oils, acrylics, etc.
- ✓ **Work on wood, metal, brick and masonry surfaces**
- ✓ **Be User-friendly**
 - safer with low odour
 - water clean up
- ✓ **Be DIY-friendly**



Step 1 Prepare – CUTEK® Quickclean

Prepares wood to optimize the performance of
CUTEK® Extreme maintenance coats



Step 1 Prepare – CUTEK® Quickclean

CUTEK® Quickclean Concentrate is Designed to:

- ✓ Clean and prepare wood for maintenance with CUTEK® Extreme
 - even out Colourtone that has started to wear or erode unevenly
- ✓ Cleans up accidental spills of CUTEK® Extreme with ease
- ✓ Lightly clean wood between maintenance coats
- ✓ Clean dirt, grease and grime from all hard surfaces:
 - Wood
 - BBQ's
 - Composite decking
 - Plastic
 - PVC
 - Tiles
 - Pavers
 - Concrete
 - Glass



Step 1 Prepare – CUTEK® Quickclean

CUTEK® Colourtone has started to erode



CUTEK® Colourtone is in good condition



Notes:

- Erosion of Colourtone due to 2nd coat of CUTEK® Extreme being applied before the 1st coat was completely dry
- Black spots due to contamination from rusted metal roof

- General maintenance cleaning before recoat
- CUTEK® Quickclean has been applied and allowed to work, now is being rinsed

Step 2 Protect – CUTEK® Extreme

High performance oil-based exterior wood stabilizer
Works on all wood species and applications
Proven Performance, protecting wood for 30+ years



Step 2 Protect – CUTEK® Extreme

CUTEK® Extreme is Designed to:

- ✓ Work on all wood species and applications
- ✓ Protect wood from the inside out
 - fully and continually penetrates, deep into the wood
 - stays mobile inside wood, with a self-healing effect
- ✓ Stabilize wood, significantly reduces splitting, warping and cupping
 - extends the service life of wood
- ✓ Be easy to apply and maintain
 - can be applied in the direct hot sunlight
 - can be applied at temps as low as 10°C (50°F) (will take longer to dry)
 - guaranteed to never peel, no sanding or stripping between coats or maintenance applications
- ✓ Protect wood right away, no need to wait for wood to weather
- ✓ Protect wood in extremely challenging environments



Step 2 Protect – CUTEK® Extreme

CUTEK® Extreme application and maintenance:

- ✓ Apply thin coats with a brush or paint pad
- ✓ For best results 1 coat of clear CUTEK® Extreme should be applied to all 6 sides of the wood prior to construction
 - Clear CUTEK® Extreme can be wet stacked
- ✓ Allow 1st coat to completely dry prior to applying 2nd coat
 - Cures in 3-7 days, depending on temperature and exposure to sunlight
- ✓ Apply 1 coat for maintenance
 - Recommended every 12-24 months
- ✓ Average coverage rate:

• New or hardwoods	15-20 m ² /L, 400-800 ft ² /US gal
• Old or rough sawn wood	4-9 m ² /L, 150-350 ft ² /US gal



The CUTEK® Extreme Difference

Wood Protection & Stability test

1 board each of Yellow Pine, Ash, Red Oak & Poplar

One end of the board was coated with CUTEK® Extreme

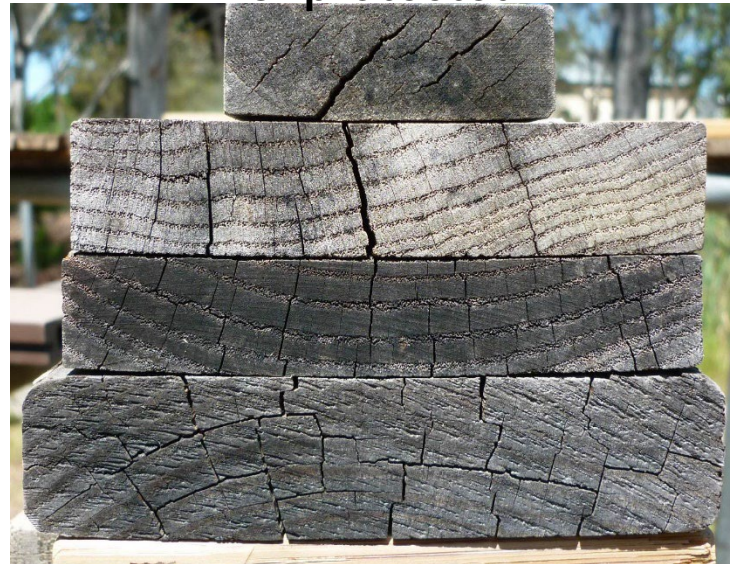
The other end of the board was left uncoated

The boards were left outside for 12 months, then stacked for these pictures

Protected



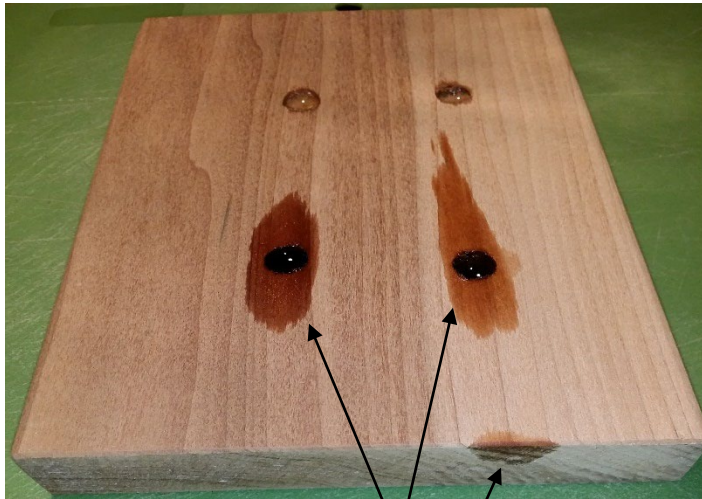
Unprotected



The CUTEK® Extreme Difference

Oil Diffusion Test

1 board with holes drilled into it
2 holes filled with CUTEK® Extreme & 2 holes filled with linseed oil



CUTEK® Extreme diffuses across the surface, but also inside the wood!

After a week the board was cut in half



Oil diffusion test – cross section




Linseed oil

CUTEK®
Extreme

The CUTEK® Extreme Difference Oil Mobility

1 year old Sample Board – planed down



Same board – 12 days later

CUTEK® Extreme stays mobile inside the wood and has a self-healing property

Step 2 Protect – CUTEK® Colortones

Adds depth and richness of color and UV protection to wood

CUTEK® Colortones are Designed to:

- ✓ Enhance, not cover up the beauty of wood
 - transparent mat finish
 - the knots, grain and natural variation of the wood shines through
 - the natural color of the wood species will influence the final color
- ✓ Look richer with each application, and on rough wood
- ✓ Will lighten/fade or erode over time with exposure and weathering
 - does not peel, will not need to be sanded



Single Strength ratio is 1 Colortone to 1 can of CUTEK® Extreme

- for a bolder color and more UV protection use Double Strength
 - 2 Colortones to 1 can of CUTEK® Extreme

Step 2 Protect – CUTEK® Colortones Color Variation of Wood



Step 2 Protect – CUTEK® Colortones Color Intensity

1 coat vs 2 coats
Single Strength:



Single Strength vs Double Strength
2 coats:



Step 2 Protect – CUTEK® Colortones

10 year old Ipe deck
Revived and Protected
CUTEK® Extreme with Autumntone Colortone



1 coat – color can be uneven
August 21, 2019



2 coats – color evens out
August 26, 2019



Almost 1 year later – color fade
June 6, 2020

Step 2 Protect – CUTEK® Pre-Mixed Samples

A trial size of CUTEK® Extreme mixed with Colortone

Single Strength: 1 Colortone to 1 can of CUTEK® Extreme



CUTEK® Pre-Mixed Samples are Designed to:

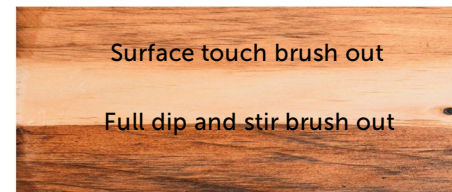
- ✓ Help with the Colortone selection for exterior wood projects

CUTEK® Colortones are heavier than CUTEK® Extreme

- the Colortone will settle to the bottom of the can
- the Pre-Mixed Sample needs to be stirred thoroughly for 1-2 minutes

Use a brush with the Pre-Mixed Sample

- dip the brush to the bottom of the can and stir 3 or 4 times



Make Wood the Star with

CUTEK[®]

