

**CUTEK<sup>®</sup>**

The Beauty of Wood  
Powerfully Protected

## Who are we?

- CUTEK® products are an innovative wood care system
    - with it's roots in Australia and New Zealand
  - The primary focus is to ensure that wood has the longest life possible
  - Proven performance for over 30 years, on 5 continents
  - CUTEK® products were introduced to the North American market in 2011
- 
- Deck Source Inc. is a family owned and run company
  - It was founded by professional deck builders to bring industry leading and innovative decking products to the Canadian market
    - CUTEK® products were part of that assortment – and they amazed us!
    - Since 2014 Deck Source Inc. has been concentrating entirely on the CUTEK® line of products, and is the official Canadian license holder
    - Since 2022 we are the official license holder for the United States



## The CUTEK® System

CUTEK® offers a full line of wood care products that Prepare and Protect exterior wood structures

### Step 1 ▶ Prepare



Formerly CUTEK® Proclean

Formerly CUTEK® CD33 Naked

### Step 2 ▶ Protect



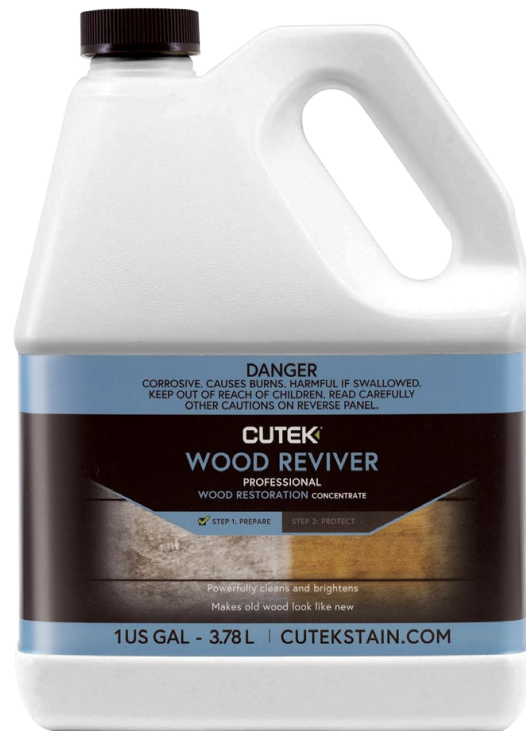
# CUTEK® Key Benefits & Cost Considerations

- ✓ Quality and technology of products
- ✓ CUTEK® products are easy to use
  - do not need to be professionally applied, to get professional results
- ✓ CUTEK® Extreme gets twice the coverage of most other coatings
- ✓ CUTEK® Extreme provides a long-term cumulative protection
  - FULLY penetrating oil – to protect wood from the inside out
  - Made with non-vegetable oil, and has no water
  - Has a SELF-HEALING effect, and stays mobile in the wood
- ✓ CUTEK® Extreme does not peel or flake
  - maintenance is fast and easy, just wash and recoat, NO sanding required
- ✓ Extends the service life of wood
- ✓ CUTEK® Cares
  - We plant 1 tree for each can of CUTEK® Extreme sold!



## Step 1 Prepare – CUTEK® Wood Reviver

Prepares wood that is weathered and/or stubbornly stained for the initial application of CUTEK® Extreme



Formerly CUTEK® Proclean

## Step 1 Prepare – CUTEK® Wood Reviver

### CUTEK® Wood Reviver is Designed to:

- ✓ Revive all species of wood from years of weathering
  - an alternative to sanding
- ✓ Effectively remove stubborn stains
  - tannins, resins, water, iron, oil & grease
  - as well as mold, mildew, fungus and algae
- ✓ Open wood up to drink in CUTEK® Extreme
- ✓ Prepare smooth or new wood for the initial coat of CUTEK® Extreme
  - helps to remove extractives and break down mill glaze



## Step 1 Prepare – CUTEK® Wood Reviver

CUTEK® Wood Reviver is Different from other Restorers/Brighteners:

- ✓ 1 product to restore severely weathered wood, and remove all types of stubborn staining
- ✓ Can sit and work on the wood surface for 1 to 24 hrs
- ✓ Does NOT need to be kept wet
- ✓ Can be used full strength or diluted





## Step 1 Prepare – CUTEK® Wood Reviver

10 year old Ipe deck

Before



After

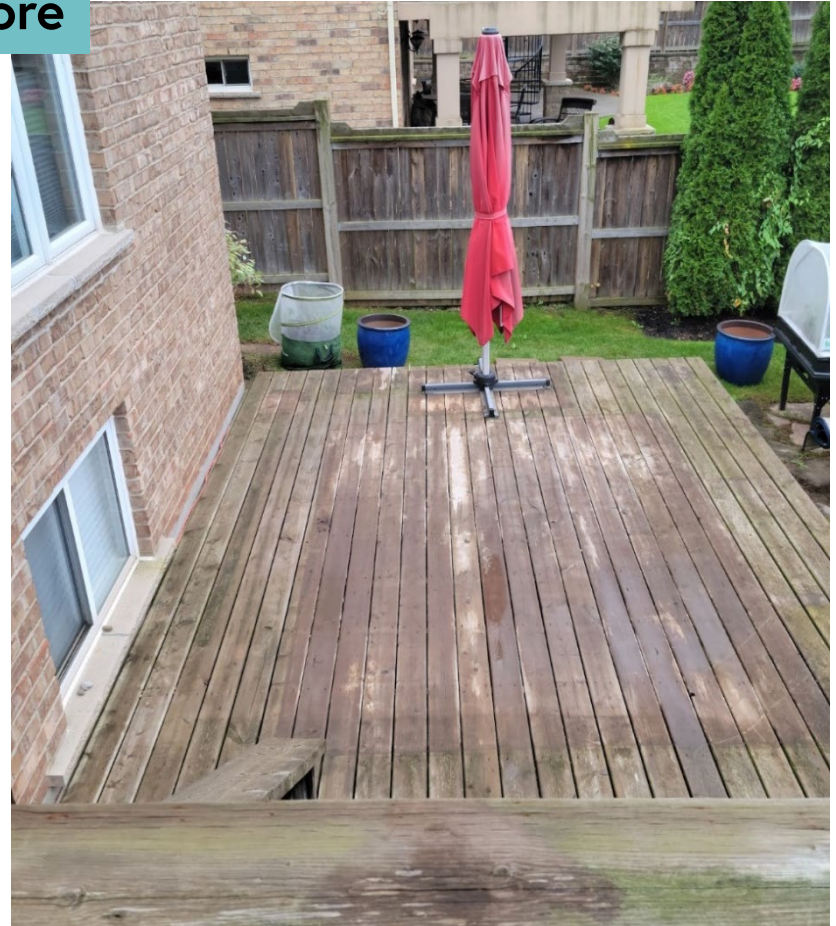




## Step 1 Prepare – CUTEK® Wood Reviver

10 -15 year old pressure treated deck

Before





## Step 1 Prepare – CUTEK® Wood Reviver

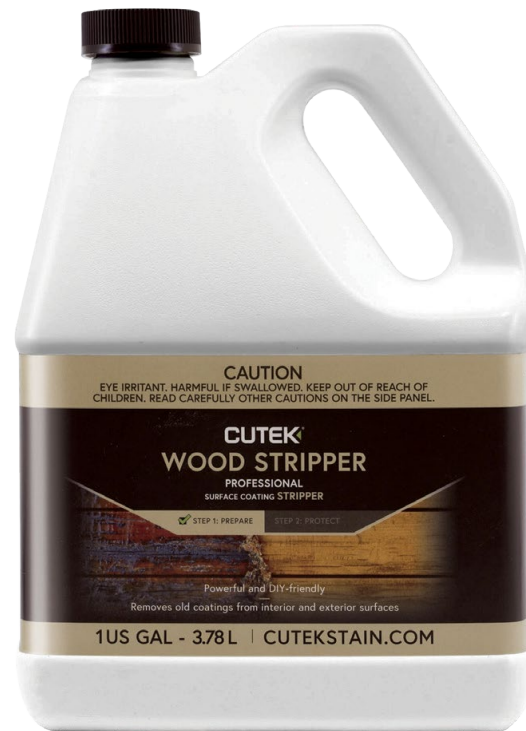
10 -15 year old pressure treated deck

After



## Step 1 Prepare – CUTEK® Wood Stripper

Prepares wood by removing existing film forming coatings for the initial application of CUTEK® Extreme



Formerly CUTEK® CD33 Naked

## Step 1 Prepare – CUTEK® Wood Stripper

CUTEK® Wood Stripper is a Designed to:

- ✓ **Be a smart and safer alternative**
  - No methylene chloride, or NMP
- ✓ **Remove multiple layers of the most commonly used coatings**
  - latex paints, stains, varnishes, linseed oils, acrylics, etc.
- ✓ **Work on wood, metal, brick and masonry surfaces**
- ✓ **Be User-friendly**
  - safer with low odour
  - water clean up
- ✓ **Be DIY-friendly**



## Step 1 Prepare – CUTEK® Quickclean

Prepares wood to optimize the performance of  
CUTEK® Extreme maintenance coats





## Step 1 Prepare – CUTEK® Quickclean

### CUTEK® Quickclean Concentrate is Designed to:

- ✓ Clean and prepare wood for maintenance with CUTEK® Extreme
  - even out Colourtone that has started to wear or erode unevenly
- ✓ Cleans up accidental spills of CUTEK® Extreme with ease
- ✓ Lightly clean wood between maintenance coats
- ✓ Clean dirt, grease and grime from all hard surfaces:
  - Wood
  - Tiles
  - BBQ's
  - Pavers
  - Composite decking
  - Concrete
  - Plastic
  - Glass
  - PVC



## Step 1 Prepare – CUTEK® Quickclean

CUTEK® Colourtone has started to erode



CUTEK® Colourtone is in good condition



Notes:

- Erosion of Colourtone due to 2<sup>nd</sup> coat of CUTEK® Extreme being applied before the 1<sup>st</sup> coat was completely dry
- Black spots due to contamination from rusted metal roof

- General maintenance cleaning before recoat
- CUTEK® Quickclean has been applied and allowed to work, now is being rinsed

## Step 2 Protect – CUTEK® Extreme

High performance oil-based exterior wood stabilizer  
Works on all wood species and applications  
Proven Performance, protecting wood for 30+ years



## Step 2 Protect – CUTEK® Extreme

CUTEK® Extreme is Designed to:

- ✓ Work on all wood species and applications
- ✓ Protect wood from the inside out
  - fully and continually penetrates, deep into the wood
  - stays mobile inside wood, with a self-healing effect
- ✓ Stabilize wood, significantly reduces splitting, warping and cupping
  - extends the service life of wood
- ✓ Be easy to apply and maintain
  - can be applied in the direct hot sunlight
  - can be applied at temps as low as 10°C (50°F) (will take longer to dry)
  - guaranteed to never peel, no sanding or stripping between coats or maintenance applications
- ✓ Protect wood right away, no need to wait for wood to weather
- ✓ Protect wood in extremely challenging environments



## Step 2 Protect – CUTEK® Extreme

### CUTEK® Extreme application and maintenance:

- ✓ Apply thin coats with a brush or paint pad
- ✓ For best results 1 coat of clear CUTEK® Extreme should be applied to all 6 sides of the wood prior to construction
  - Clear CUTEK® Extreme can be wet stacked
- ✓ Allow 1<sup>st</sup> coat to completely dry prior to applying 2<sup>nd</sup> coat
  - Cures in 3-7 days, depending on temperature and exposure to sunlight
- ✓ Apply 1 coat for maintenance
  - Recommended every 12-24 months
- ✓ Average coverage rate:
 

• New or hardwoods	15-20 m <sup>2</sup> /L, 400-800 ft <sup>2</sup> /US gal
• Old or rough sawn wood	4-9 m <sup>2</sup> /L, 150-350 ft <sup>2</sup> /US gal





## The CUTEK® Extreme Difference

### Wood Protection & Stability test

1 board each of Yellow Pine, Ash, Red Oak & Poplar

One end of the board was coated with CUTEK® Extreme

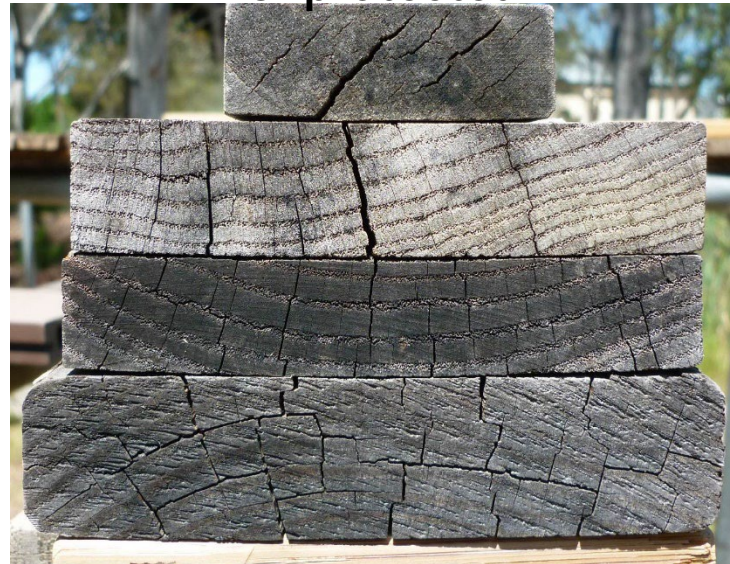
The other end of the board was left uncoated

The boards were left outside for 12 months, then stacked for these pictures

**Protected**



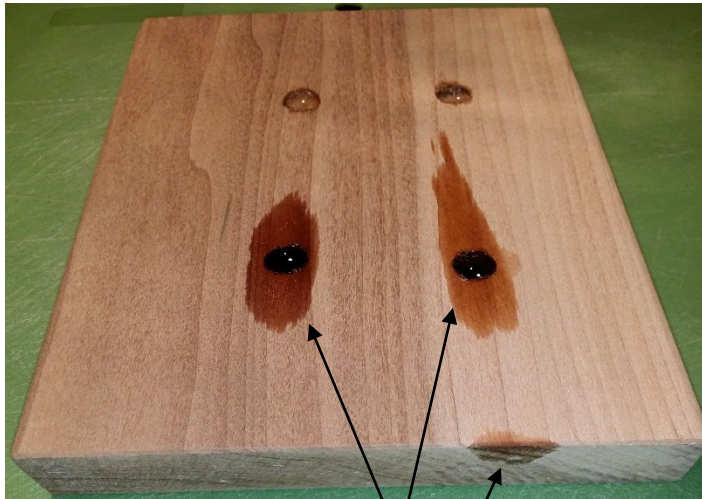
**Unprotected**



## The CUTEK® Extreme Difference

### Oil Diffusion Test

1 board with holes drilled into it  
2 holes filled with CUTEK® Extreme & 2 holes filled with linseed oil



CUTEK® Extreme diffuses across the surface, but also inside the wood!

After a week the board was cut in half



Oil diffusion test – cross section



Linseed oil

CUTEK®  
Extreme



## The CUTEK® Extreme Difference Oil Mobility

1 year old Sample Board – planed down



CUTEK® Extreme stays mobile inside the wood and has a self-healing property

## Step 2 Protect – CUTEK® Colortones

Adds depth and richness of color and UV protection to wood

CUTEK® Colortones are Designed to:

- ✓ Enhance, not cover up the beauty of wood
  - transparent mat finish
  - the knots, grain and natural variation of the wood shines through
  - the natural color of the wood species will influence the final color
- ✓ Look richer with each application, and on rough wood
- ✓ Will lighten/fade or erode over time with exposure and weathering
  - does not peel, will not need to be sanded



Single Strength ratio is 1 Colortone to 1 can of CUTEK® Extreme

- for a bolder color and more UV protection use Double Strength
  - 2 Colortones to 1 can of CUTEK® Extreme

## Step 2 Protect – CUTEK® Colortones Color Variation of Wood





## Step 2 Protect – CUTEK® Colortones Color Intensity

1 coat vs 2 coats  
Single Strength:

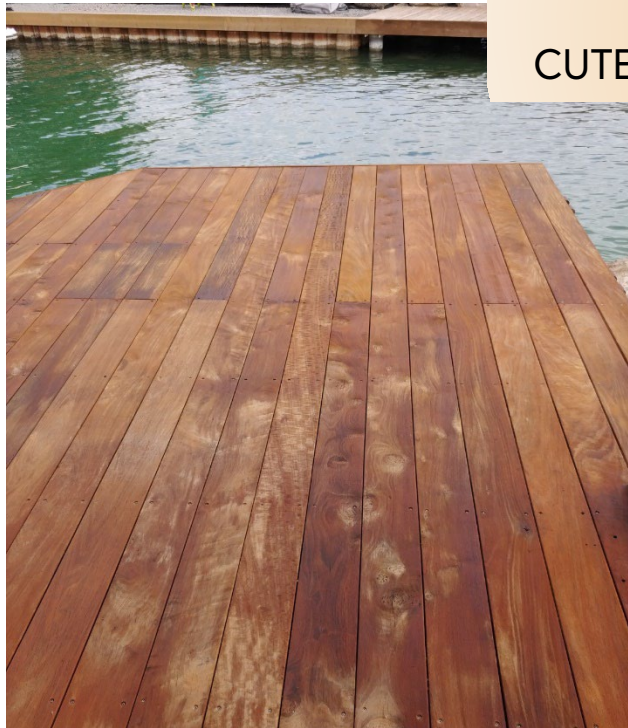


Single Strength vs Double Strength  
2 coats:



## Step 2 Protect – CUTEK® Colortones

10 year old Ipe deck  
Revived and Protected  
CUTEK® Extreme with Autumntone Colortone



1 coat – color can be uneven  
August 21, 2019



2 coats – color evens out  
August 26, 2019



Almost 1 year later – color fade  
June 6, 2020

## Step 2 Protect – CUTEK® Pre-Mixed Samples

A trial size of CUTEK® Extreme mixed with Colortone

Single Strength: 1 Colortone to 1 can of CUTEK® Extreme



CUTEK® Pre-Mixed Samples are Designed to:

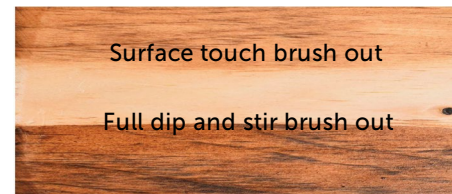
- ✓ Help with the Colortone selection for exterior wood projects

CUTEK® Colortones are heavier than CUTEK® Extreme

- the Colortone will settle to the bottom of the can
- the Pre-Mixed Sample needs to be stirred thoroughly for 1-2 minutes

Use a brush with the Pre-Mixed Sample

- dip the brush to the bottom of the can and stir 3 or 4 times





# Make Wood the Star with

# CUTEK<sup>®</sup>

